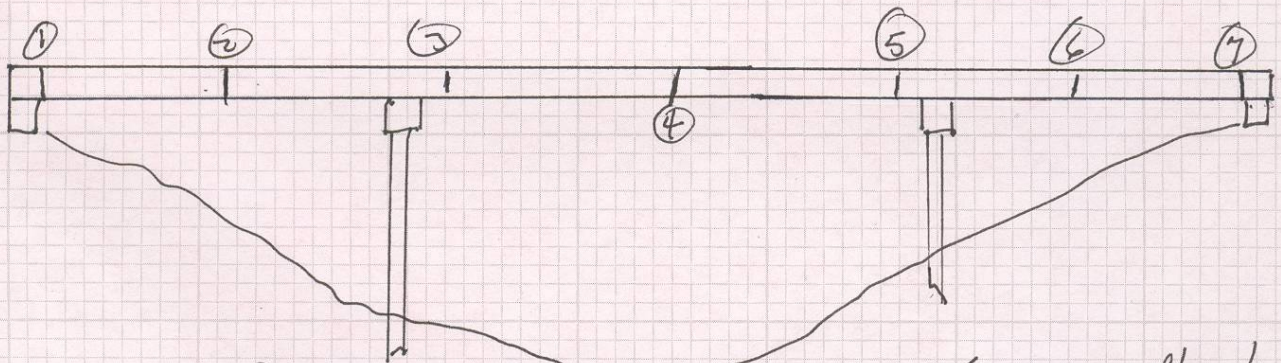


Rt side Post 2 Broken off  
 Post 3 Weld Broken FLange Damaged  
 Post 5 Weld Broken FLange Damaged  
 Post 15 Weld Broken FLange OK

Lt. side Post 3 Post 4 FLange Damaged



Location of Pin/Connection Plats.

# 4 P/C Plt Deflects most Free Play  
 @ Pins. ( $\frac{1}{8}$ "  $\pm$   $\frac{1}{16}$ " )

# 2 & 6 P/C Plts. Deflect Little. Less Than  $\frac{1}{8}$ " Free play.

Note Cover Plate Between Girders 2 & 3 Weld Broken. These are located @ P/C Plts 3 & 5.

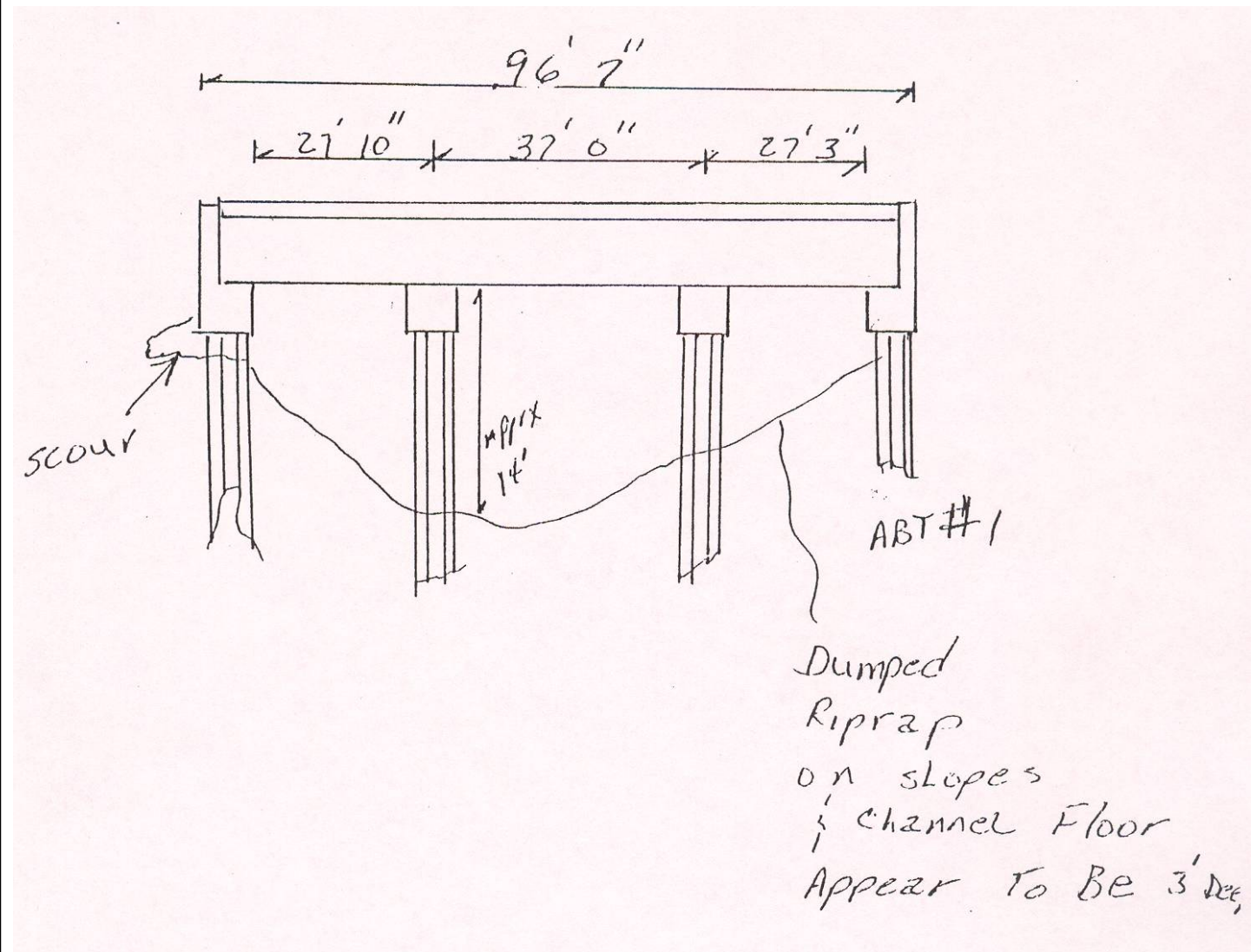
# BRIDGE INSPECTION REPORT NBIS FORM III

Inspected by RLW / TCT  
 Date 04-08-2003

Page 1 of

Dist- 02; Co- 01 -- ARKANSAS; Rte- 00299; Sect/Zone- 00/A; Log- 003.650; Str #- 20859





**BRIDGE INSPECTION REPORT**  
**NBIS FORM III**

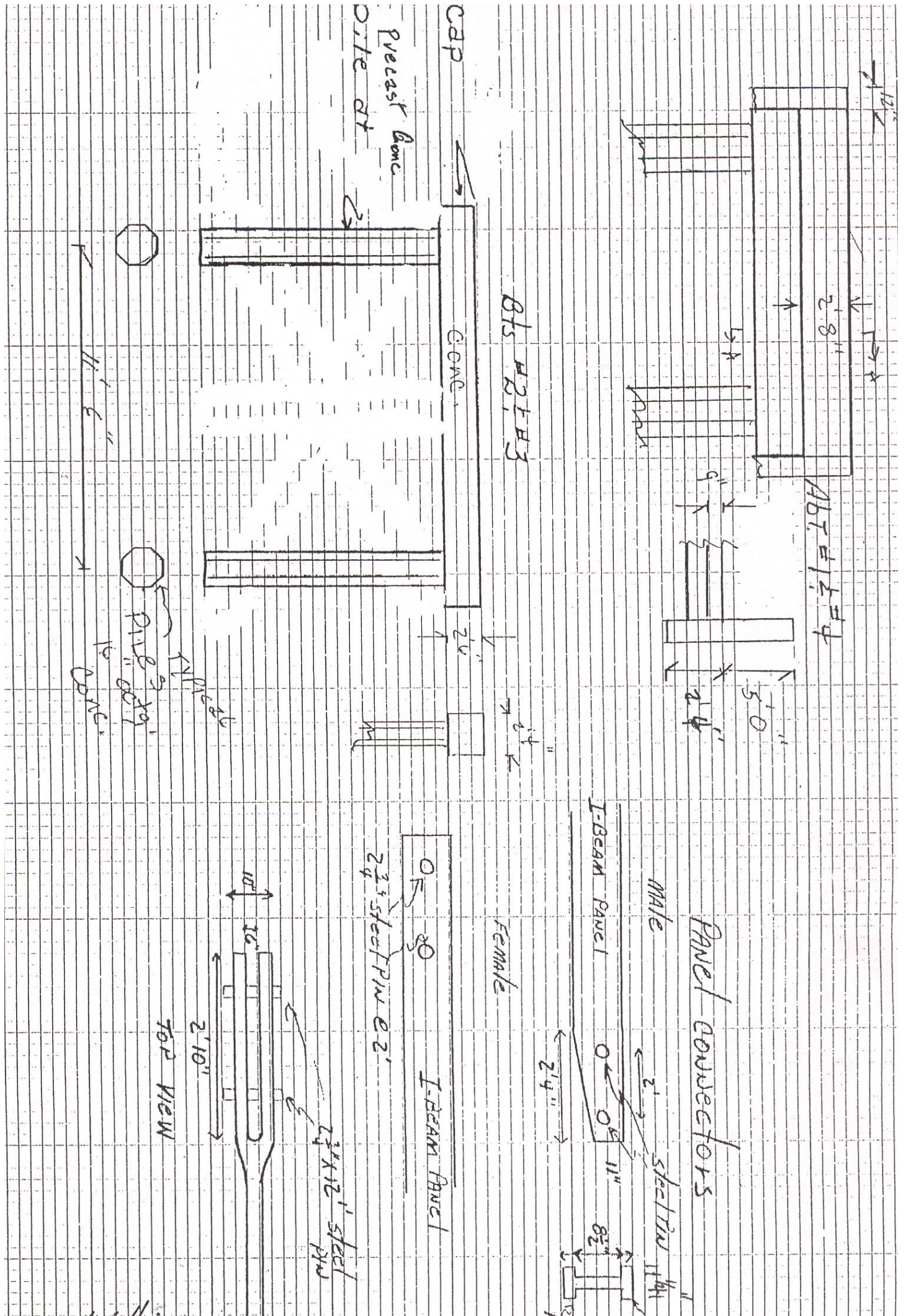
Inspected by RLW / TCT  
Date 04-08-2003

Page 1 of 3

Dist- 02; Co- 01 -- ARKANSAS; Rte- 00299; Sect/Zone- 00/A; Log- 003.650; Str #- 20859







**BRIDGE INSPECTION REPORT  
NBIS FORM III**

Inspected by RLW / TCT  
Date 04-08-2003

Page 3 of 3

Dist- 02; Co- 01 -- ARKANSAS; Rte- 00299; Sect/Zone- 00/A; Log- 003.650; Str #- 20859